



rayolite[®]

AA and AA-ARC
Long-Life and Standard Reflectors

**Rayolite Reflective Pavement Markers.
Designed To Endure The Rigors Of The Road.**



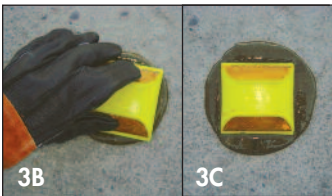
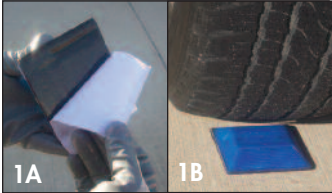
Designed For Safety. Engineered To Last.

How to Apply Markers

Prepare Surface Area

1. Clean & prime the surface area.
2. Prepare the surface by removing any loose materials from the road surface.

Apply Markers



Three Application Methods

1. Peel off the protective paper of the butyl pad (1A). Place marker on road surface and apply weight to secure marker to the surface (1B).
2. Apply epoxy to the bottom of the marker, spreading evenly.
3. Apply adequate amount of bituminous adhesive to the road surface (3A). Road surface should be dry. Place marker on the prepared road surface applying slight pressure until the marker contacts the road surface (3B) and forces a bead of epoxy or bituminous around all four corners (3C).

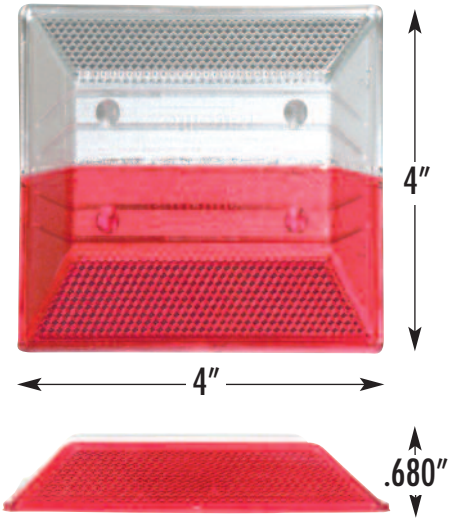
4500 N. Sam Houston Parkway W.
Building A, Suite 120
Houston, Texas 77086

Phone: (281) 617-2240
Toll Free: (800) 848-7025
Fax: (281) 583-1506

AA Standard Reflectors and AA-ARC Long-Life Reflectors

The AA Standard and AA-ARC Long-Life Reflectors are designed to offer maximum strength and high-reflectivity.

A rib and fish hook design makes for maximum adherence between the shell and fill material. The AA-ARC has an abrasion resistance coating chemically bonded to the lens surface to protect it from the grinding action of dirt, sand and contact from traffic volume.



Specifications

Material: AA—True Cube-Corner type Reflex Reflector, molded of optic grade Methyl Methacrylate (plastic). AA-ARC—Molded with optic grade Methyl Methacrylate filled with adherent thermosetting compound, with filler designed for impact and wear resistance.
Reflective Area: 3.25 sq. in.
Packed: 50 per carton
Weight: Approximate weight 23 lbs. per carton

Features	AA	AA-ARC
Maximum Strength	✓	✓
High-Reflectivity	✓	✓
Maximum Adherence with Rib & Hook Design	✓	✓
Abrasion Resistance Coating		✓

Lens Type

