

rayolite[®]

Model 2002

Long-Life Reflectors

Rayolite Abrasion Resistant Reflective Pavement Markers.
Designed To Endure The Rigors Of The Road.



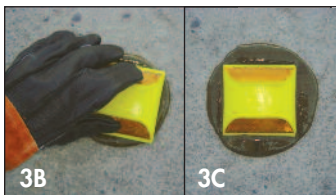
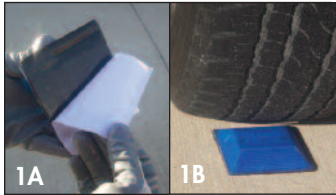
— **Designed For Safety. Engineered To Last.** —

How to Apply Markers

Prepare Surface Area

1. Clean & prime the surface area.
2. Prepare the surface by removing any loose materials from the road surface.

Apply Markers



Three Application Methods

1. Peel off the protective paper of the butyl pad (1A). Place marker on road surface and apply weight to secure marker to the surface (1B).
2. Apply epoxy to the bottom of the marker, spreading evenly.
3. Apply adequate amount of bituminous adhesive to the road surface (3A). Road surface should be dry. Place marker on the prepared road surface applying slight pressure until the marker contacts the road surface (3B) and forces a bead of epoxy or bituminous around all four corners (3C).

4500 N. Sam Houston Parkway W.
Building A, Suite 120
Houston, Texas 77086

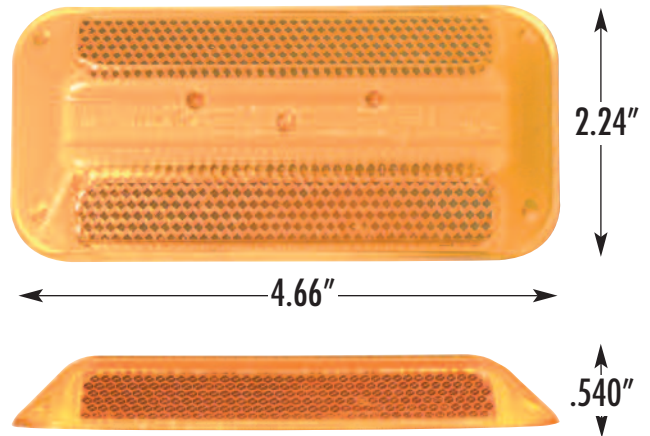
Phone: (281) 617-2240
Toll Free: (800) 848-7025
Fax: (281) 583-1506

Model 2002 Long-Life Reflectors

The Model is 2002 is a long-life reflective pavement marker designed to offer maximum strength, high-reflectivity and low tire impact.

A rib and fish hook design makes for maximum adherence between the shell and fill material. An abrasion resistance coating in chemically bonded to the lens surface to protect it from the grinding action of dirt, sand and contact from traffic volume.

The Model 2002 has a reduced and smoothed edge shape that minimizes the impact and increases its usual life. This product is designed to be installed in slots or surface.



Specifications

Material: Molded with optic grade Methyl Methacrylate filled with adherent thermosetting compound, with filler designed for impact and wear resistance.

Reflective Area: 2.20 sq. in.

Packed: 100 per carton

Weight: Approximate weight 22 lbs. per carton

Lens Type

Recognizing that complex traffic arteries require improved communication to motorists in daylight hours as well as during darkness, Rayolite® has incorporated daylight marking in its reflective Pavement Markers by means of brightly colored and highly visible housings.

