

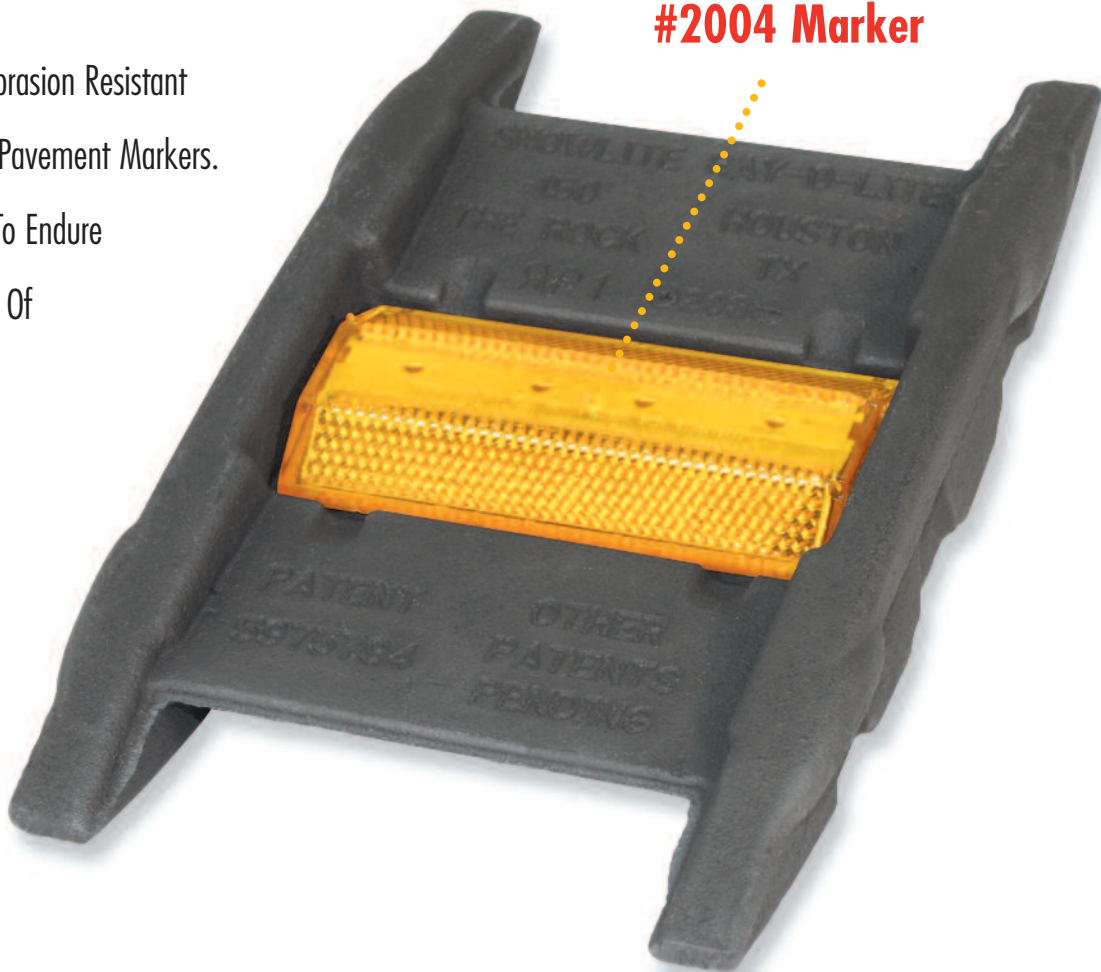
rayolite[®]

Snow-Lite[®] 150

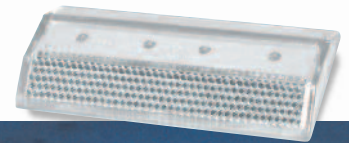
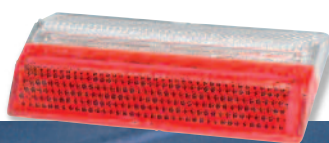
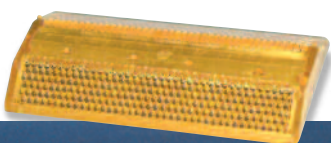
Medium Profile

**Rayolite
#2004 Marker**

Rayolite Abrasion Resistant
Reflective Pavement Markers.
Designed To Endure
The Rigors Of
The Road.



Designed For Safety. Engineered To Last.



4500 N. Sam Houston Parkway W.
 Building A, Suite 120
 Houston, Texas 77086

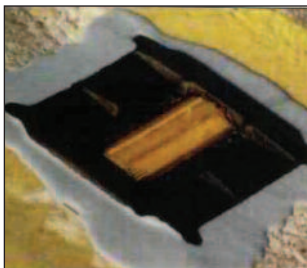
Phone: (281) 617-2240
 Toll Free: (800) 848-7025
 Fax: (281) 583-1506



1. CUT: Saw roadway to a depth of approximately 1.5 inches (3.8 cm)



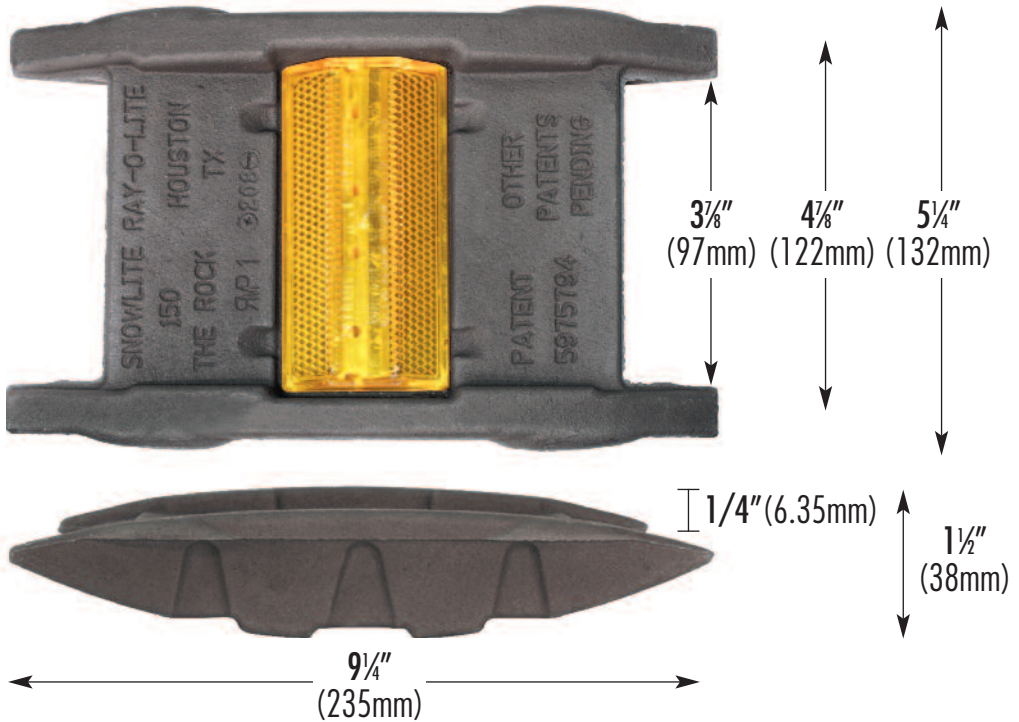
2. EPOXY: Next, fill cut-out area with an approved two-part epoxy to approximately one half inch (1.3 cm) from the upper lip.



3. DROP-IN PLACE: Simply position the marker so that the leveling flares on either side sit flush on the road surface and both ends are covered by the epoxy.

Snow-Lite® 150 and CR150 Snowplowable Reflector Markers

These Snow-Lite® models feature a Medium profile design that incorporates both the reduced impact for the snow plow operator from both directions and an increased reflective visibility over the Low Profile design. Both include a highly reflective insert with our Abrasion Resistant Coating. You may choose either the standard Model 150 or the Model CR150 which includes a center rail for additional protection of the reflective lens.



Snowplowable Reflectors

2004 Long-Life Reflectors

The Model 2004 is a snowplowable type reflective pavement marker designed for slot mounting or as a replacement reflector for most snowplowable castings. An abrasion resistant coating is chemically bonded to the lens surface to protect it from the grinding action of dirt, sand and contact from traffic volume.

		Part Numbers	
Lens Type		Insert Only	Model 150
Type B	2 Way Clear	20042W	SL150R042W
Type C	Clear and Red	2004WR	SL150R042WR
Type D	2 Way Amber	20042A	SL150R042A
Type G	1 Way Clear	20041W	SL150R041W
Type H	1 Way Amber	20041A	SL150R041A
Type K	1 Way Red	20041R	SL150R041R
Type DR	2 Way Red	20042R	SL150R042R
Type X	Amber and Red	2004AR	SL150R04AR
Type Z	Clear and Amber	2004WA	SL150R04WA