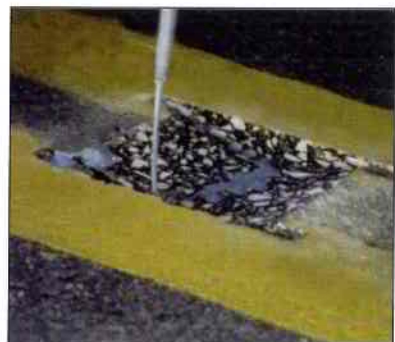


Installation

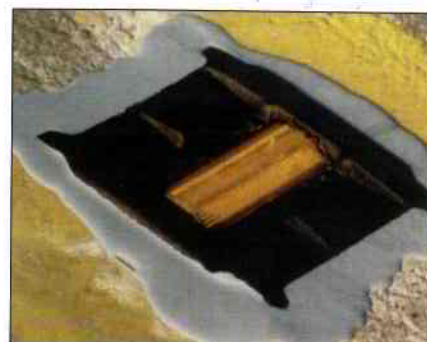
Method used to install Rayolite® Snowplowable Reflectors



1 CUT: Saw roadway to a depth of approximately 1.5 inches (3.8 cm)



2 EPOXY: Next, fill cut out area with an approved two-part epoxy to approximately one half inch (1.3 cm) from the upper lip.



3 DROP IN PLACE: Simply position the marker so that the leveling flares on either side sit flush on the road surface and both ends are covered by the epoxy.

Lens Type

	Type B two way clear		Type G one way clear		Type DR two way red
	Type C clear and red		Type H one way amber		Type X amber and red
	Type D two way amber		Type K one way red		Type Z clear and amber

When Ordering Snowplowable Reflectors

		Insert Only	Model 100	Model 150	Model 200	Model 300
Type B	two way clear	7702	6802	7202	6602	6702
Type C	clear and red	7704	6804	7204	6604	6704
Type D	two way amber	7706	6806	7206	6606	6706
Type G	one way clear	7708	6808	7208	6608	6708
Type H	one way amber	7710	6810	7210	6610	6710
Type K	one way red	7712	6812	7212	6612	6712
Type DR	two way red	7716	6816	7216	6616	6716
Type X	amber and red	7720	6820	7220	6620	6720
Type Z	clear and amber	7724	6824	7224	6624	6724

Can be ordered with pad, flat bottom or sanded bottom.

rayolite®

110 Brice Street Newark, OH 43055
 Phone: (740) 345 1300 Fax: (740) 345 1336 Toll Free: 1-800 848 7025
www.rayolite.com

rayolite®

long-life reflectors

Abrasion Resistant Reflective Pavement Markers

DESCRIPTION

The Model 2004 is a snow-plowable-type reflective pavement marker designed for slot mounting or as a replacement reflector for most snowplowable castings.

An abrasion resistant coating is chemically bonded to the lens surface to protect it from the grinding action of dirt, sand and contact from traffic volume.



SPECIFICATIONS

- Lens:** Molded with optic grade Methyl Methacrylate, filled with adherent thermosetting compound, with filler designed for impact and wear resistance.
- Reflective Area:** 2.0 square inches.
- Packed:** 100 per carton.
- Weight:** Approximate weight 22 lbs. per carton.

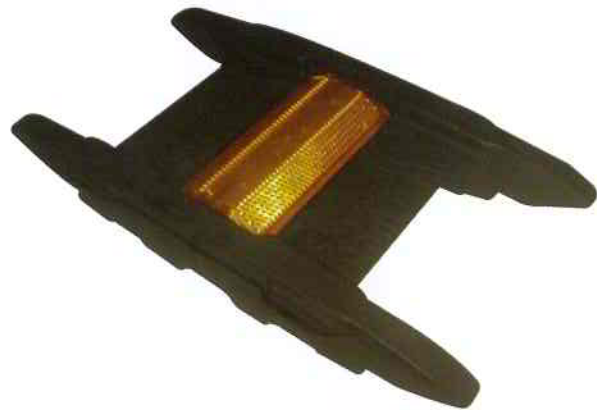


Snow-Lite® 100 and CR100

snowplowable reflectors

Snowplowable Reflective Pavement Markers

These Snow-Lite® models feature a "Standard" profile design that allows for improved reflective visibility over the "Low Profile" design. Both can be installed with a conventional saw cut configuration and include a highly reflective insert with our Abrasion Resistant Coating. You may choose either the standard Model 100 or the Model CR100 which includes a center rail for additional protection of the reflective lens.



SPECIFICATIONS

Material: Cast Iron Housing with Acrylic Reflector.
Reflective Area: 2.00 sq. in. (12.8 cm²) per reflective lense.
Weight: 57 lbs. (25.7 Kg).
Packed: 10 per carton.
Carton Dimensions: 10.25" x 11" x 11" high.
 (26cm x 27.9cm x 27.9cm) high.

Snow-Lite® 150 and CR150

snowplowable reflectors

Snowplowable Reflective Pavement Markers

These Snow-Lite® models feature a "Medium" profile design that incorporates both the reduced impact for the snow plow operator from both directions and an increased reflective visibility over the "Low Profile" design. Both include a highly reflective insert with our Abrasion Resistant Coating. You may choose either the standard Model 150 or the Model CR150 which includes a center rail for additional protection of the reflective lens.



SPECIFICATIONS

Material: Cast Iron Housing with Acrylic Reflector.
Reflective Area: 2.00 sq. in. (12.8 cm²) per reflective lense.
Weight: 41 lbs.
Packed: 10 per carton.
Carton Dimensions: 13.25" x 9.5" x 9" high.
 (33.7cm x 24.1cm x 22.9cm) high.

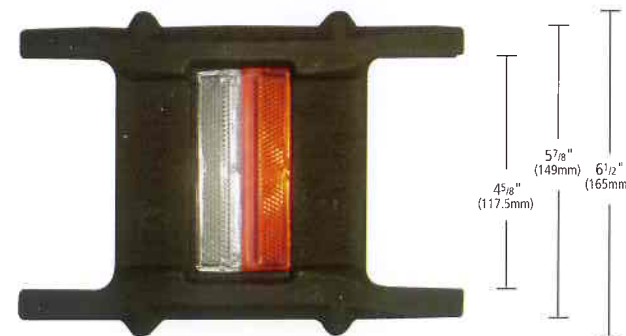
Snow-Lite® 200

snowplowable reflectors

Snowplowable Reflective Pavement Markers

The Model 200 Snow-Lite® features a low profile design to allow high speed plowing from both directions with minimal impact.

This model can be installed with a conventional saw cut configuration and includes a highly reflective insert with our Abrasion Resistant Coating.



SPECIFICATIONS

Material: Cast Iron Housing with Acrylic Reflector.
Reflective Area: 2.00 sq. in. (12.8 cm²) per reflective lense.
Weight: 54.5 lbs. (24.5 Kg).
Packed: 10 per carton.
Carton Dimensions: 13.25" x 9.5" x 9" high.
 (33.7cm x 24.1cm x 22.9cm) high.

Snow-Lite® 300

snowplowable reflectors

Snowplowable Reflective Pavement Markers

The Model 300 Snow-Lite® (patent #5,975,794) features a low profile design to allow high speed plowing from both directions with minimal impact. Designed with the snowplow driver in mind.

The Rayolite® Model 300 Snow-Lite® Reflective Snowplowable Marker System was designed for both SAFETY and durability. The Abrasion Resistant Coated, High Intensity Reflector provides excellent guidance in both wet and dry conditions.



SPECIFICATIONS

Material: Cast Iron Housing with Acrylic Reflector.
Reflective Area: 2.00 sq. in. (12.8 cm²) per reflective lense.
Weight: 50 lbs. (22.7 Kg).
Packed: 10 per carton.
Carton Dimensions: 12.25" x 7.5" x 8.25" high.
 (31.75cm x 19cm x 21cm) high.